

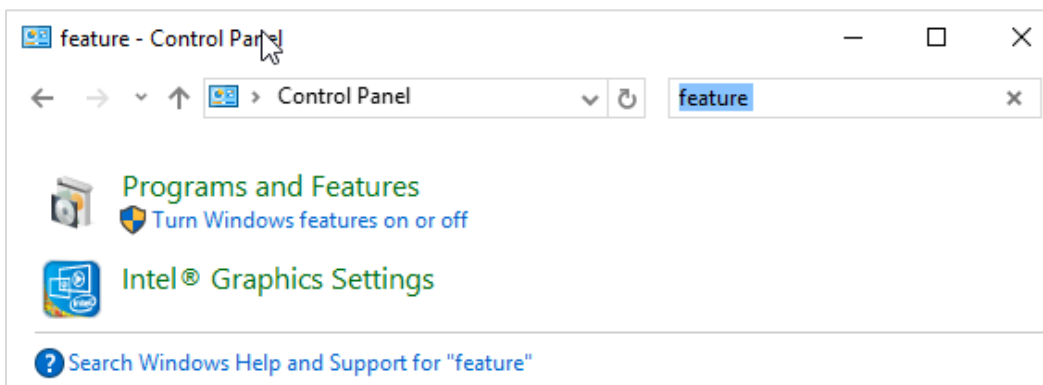
Installing REST API Documentation on a Local Workstation

This procedure installs REST API documentation on a local workstation.

REST API is available for Release 2019 and greater. While the server installation of REST API installs the API documentation on the server, it is not accessible outside the firewall. This procedure lets you install a standalone version of the API site so you can access API documentation from your local workstation.

Enabling Web Server (IIS)

1. Open the Control Panel on your local workstation and search for Features.
2. Click Turn Windows features on or off.

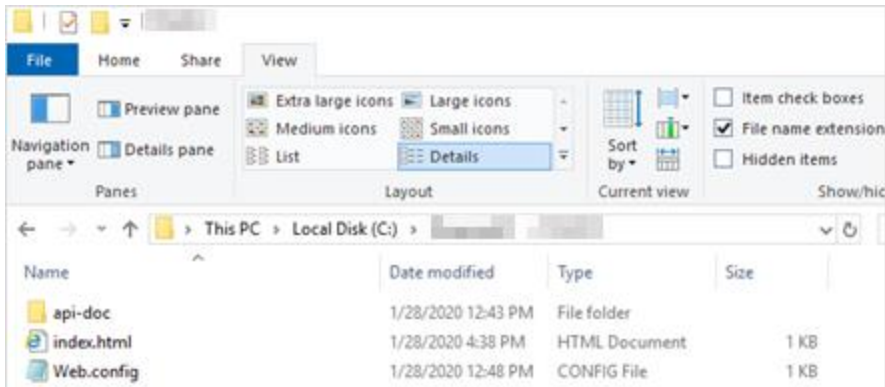


3. Select Internet Information Services, and then click Ok. Windows installs the IIS feature.

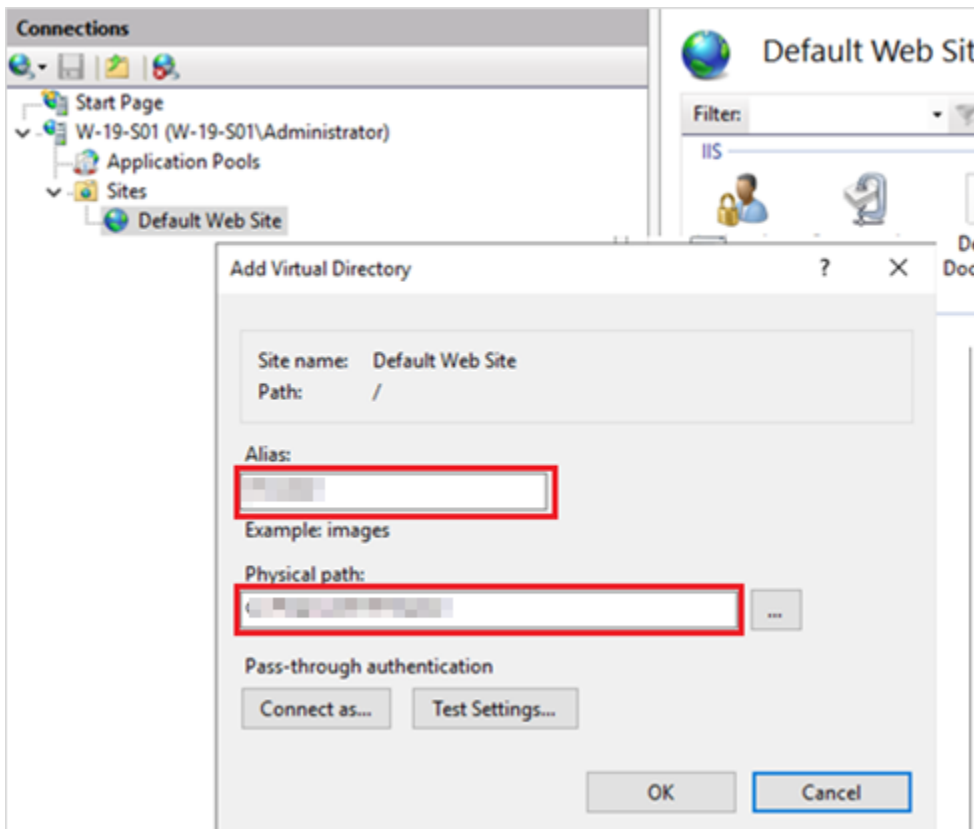
Installing REST API Locally

1. Extract the content from the REST.Docs zip file to your local workstation in the following location:

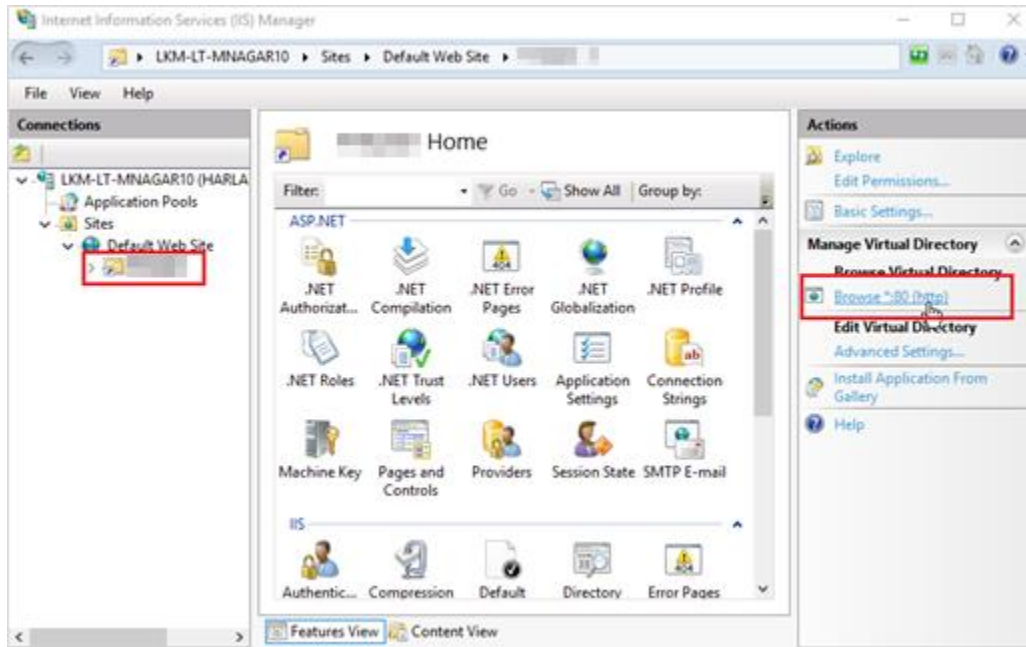
C:\API\2021



2. Open IIS and add a virtual directory. Provide an Alias and the actual path where you extracted the zip contents, and click OK



3. Select the Virtual Directory and click Browse.



4. The Rest API documentation is now available locally on your workstation.

Note: Bookmark the site location for future use.

